

Application for Android devices

GIS Collector

Promoted by



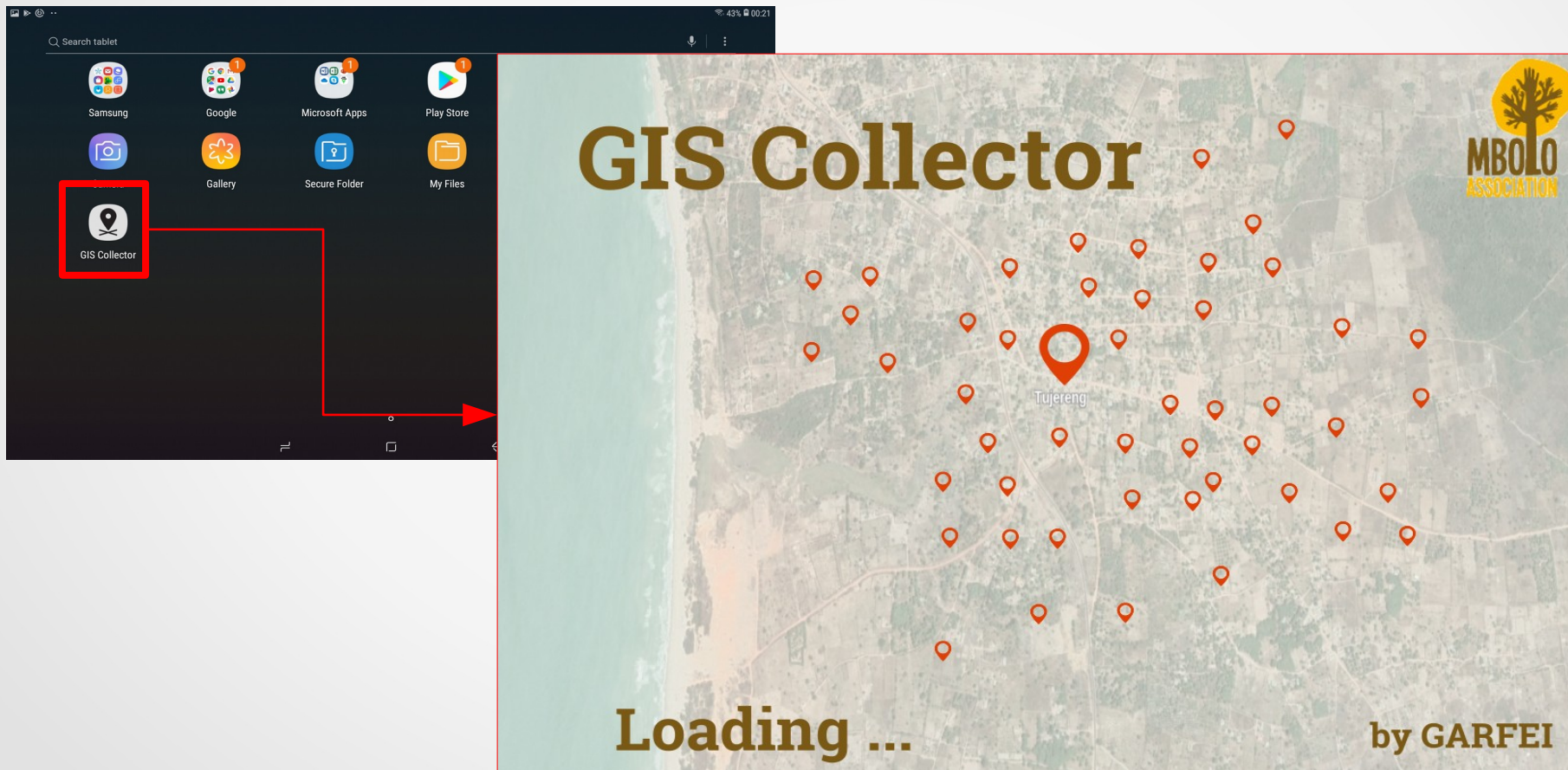
Guide's index

1. APP initialization	Pg. 3
2. «Login»	Pg. 4 - 5
3. APP menu	Pg. 6
4. «Map»	Pg. 7 - 8
5. Markers' form	Pg. 9 - 10
6. «Sync Up»	Pg. 11 - 12
7. «Gallery»	Pg. 13 – 14

1. APP initialization

Pg. 3

Clicking over «GIS Collector» where you find it into you device menu



This is the initial Splash. You must to wait for while the APP is charging the components and libraries to work correctly.

2. «Login»

Pg. 4

There are two methods to login in the APP:

- 1.- Enter your e-mail + click on «Login»
- 2.- Clicking on MBOLO User

Login into GIS Collector

The screenshot shows the login interface for the MBOLO Association. At the top, there is a text input field labeled "insert your e-mail". Below this field are two buttons: "Login" and "MBOLO User". Red lines with arrows point from the numbered list above to these elements: from item 1 to the email field, from item 2 to the "MBOLO User" button, and from item 1 to the "Login" button. The bottom of the screen features the MBOLO Association logo, which includes a stylized tree and the text "MBOLO ASSOCIATION", and a photograph of a smiling woman wearing a headwrap, set against a background of stylized hills in yellow, blue, and brown.

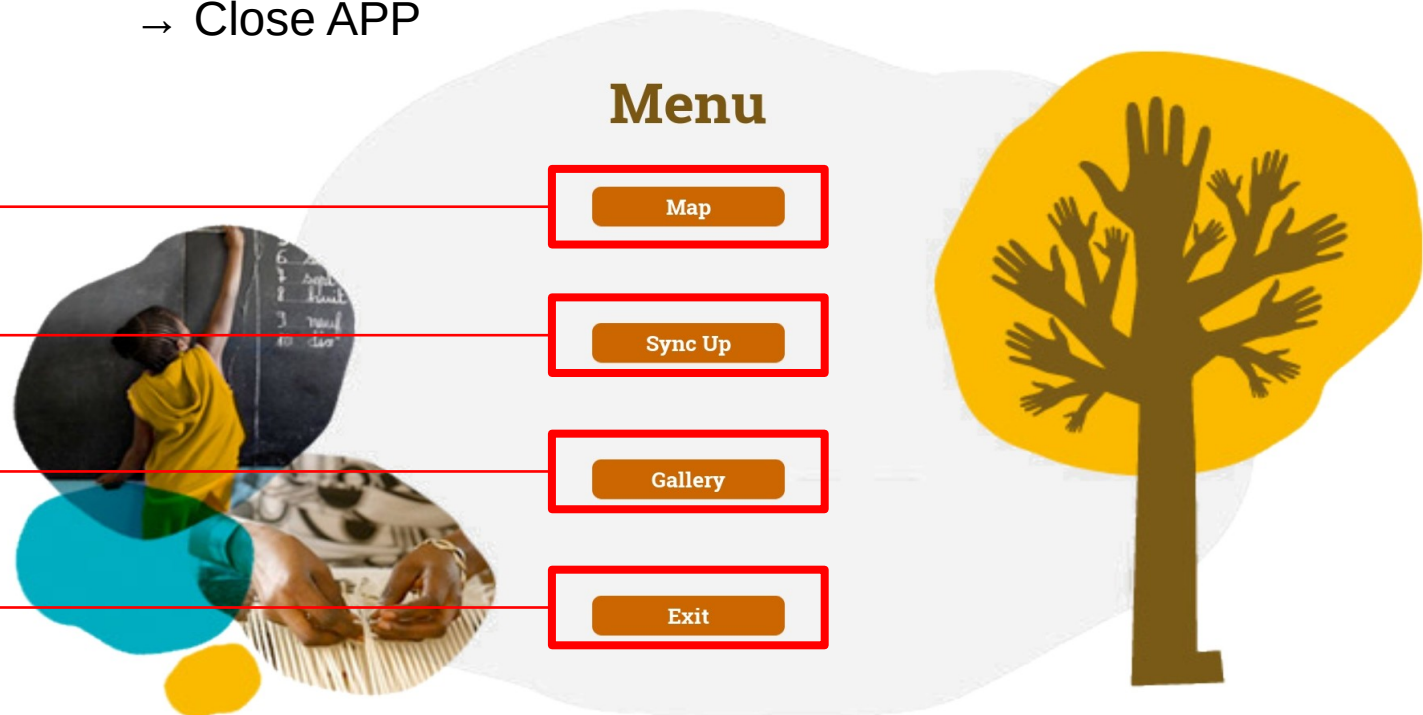
- **First option.** This is the general login for all users. Enter the e-mail correctly and click on «Login».
 - **Error:** If you can't access into the APP, you must to revise that your mail is written correctly.
- **Opció 2.** Access as MBOLO User:
 - It is thought for Mbolo association users.
 - It is thought too, for all users whose no has an habitual e-mail.

3. APP Menu

Pg. 6

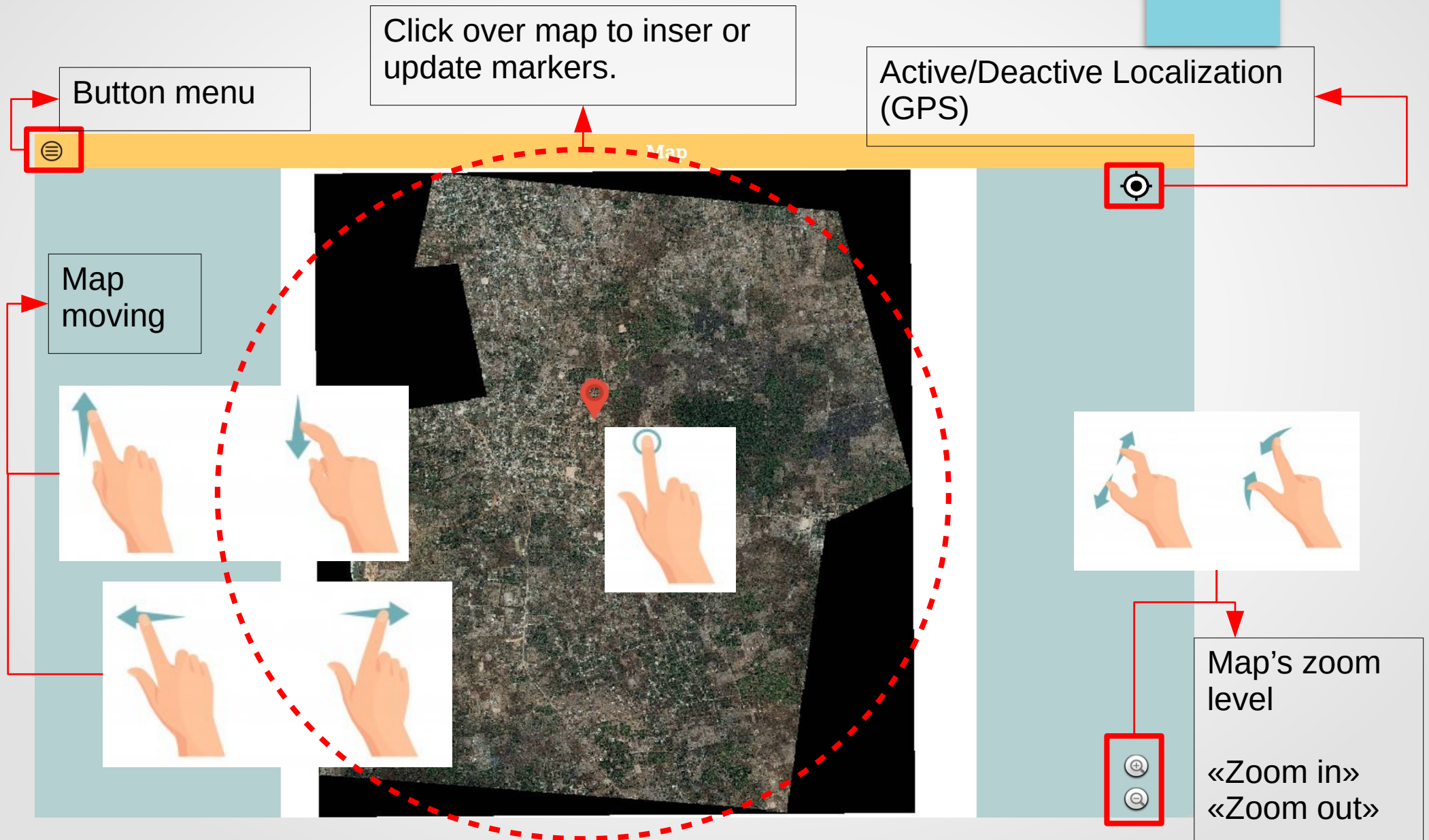
APP Menu, there are different buttons to access to the view which is label:

- **Button «Map»** → Map View
- **Button «Sync Up»** → Data synchronize
- **Button «Gallery»** → Photos gallery
- **Button «Exit»** → Close APP



4. «Map»

Pg. 7



4. «Map»

Pg. 8



Menu button
Go back to APP menu



Located button
Active/Deactive the Location sensor as GPS



«Zoom in»
Increase the zoom level of the map, thus increasing the image

«Zoom out»
It reduces the zoom level of the map, so it reduces the image

Click over map to insert a new marker, it opens the insert form
See on
Pg. 9



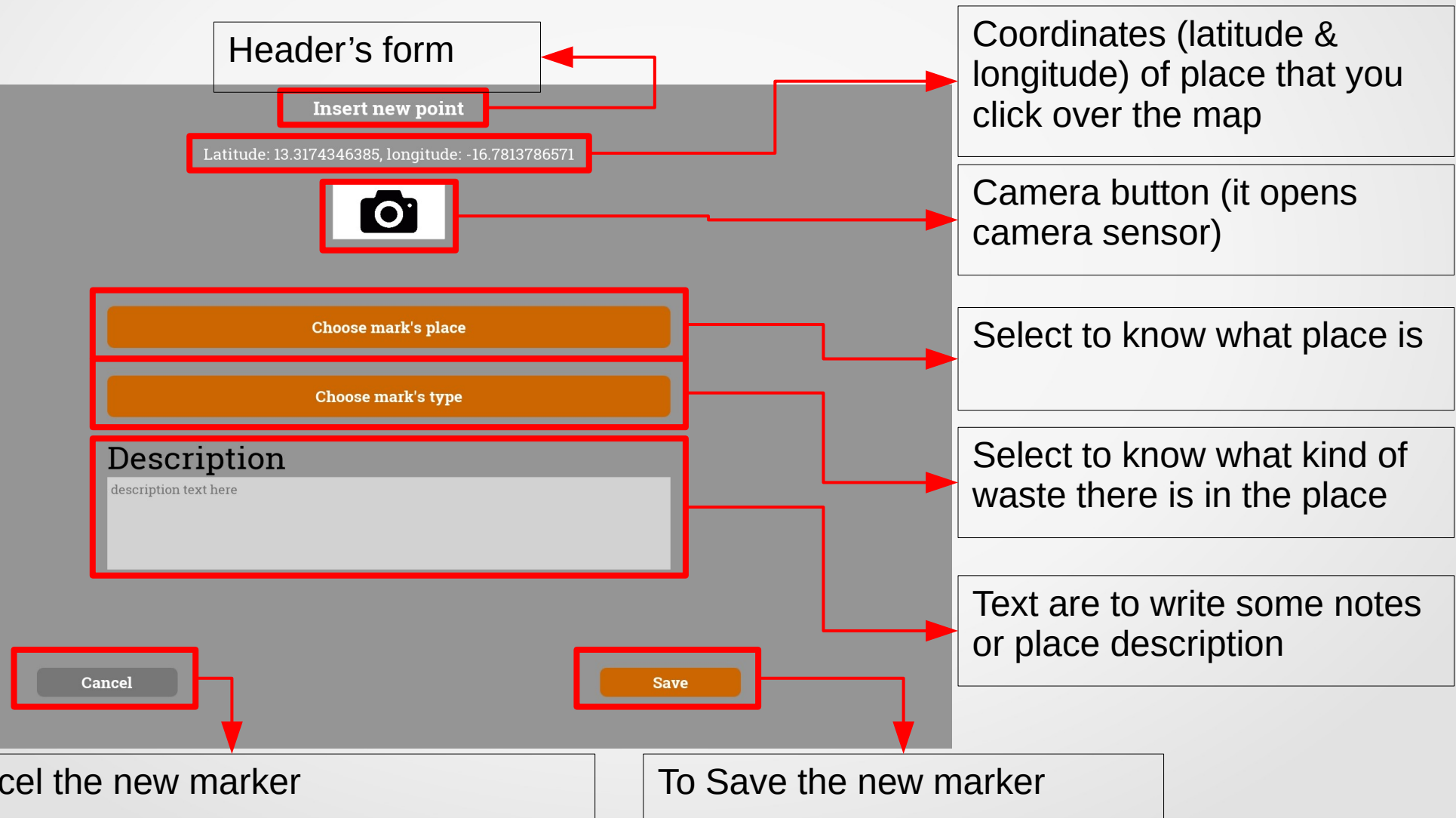
Click over marker, you can modify or see the marker information. It opens the modify form. See on
Pg. 10



5. Markers' form

Pg. 9

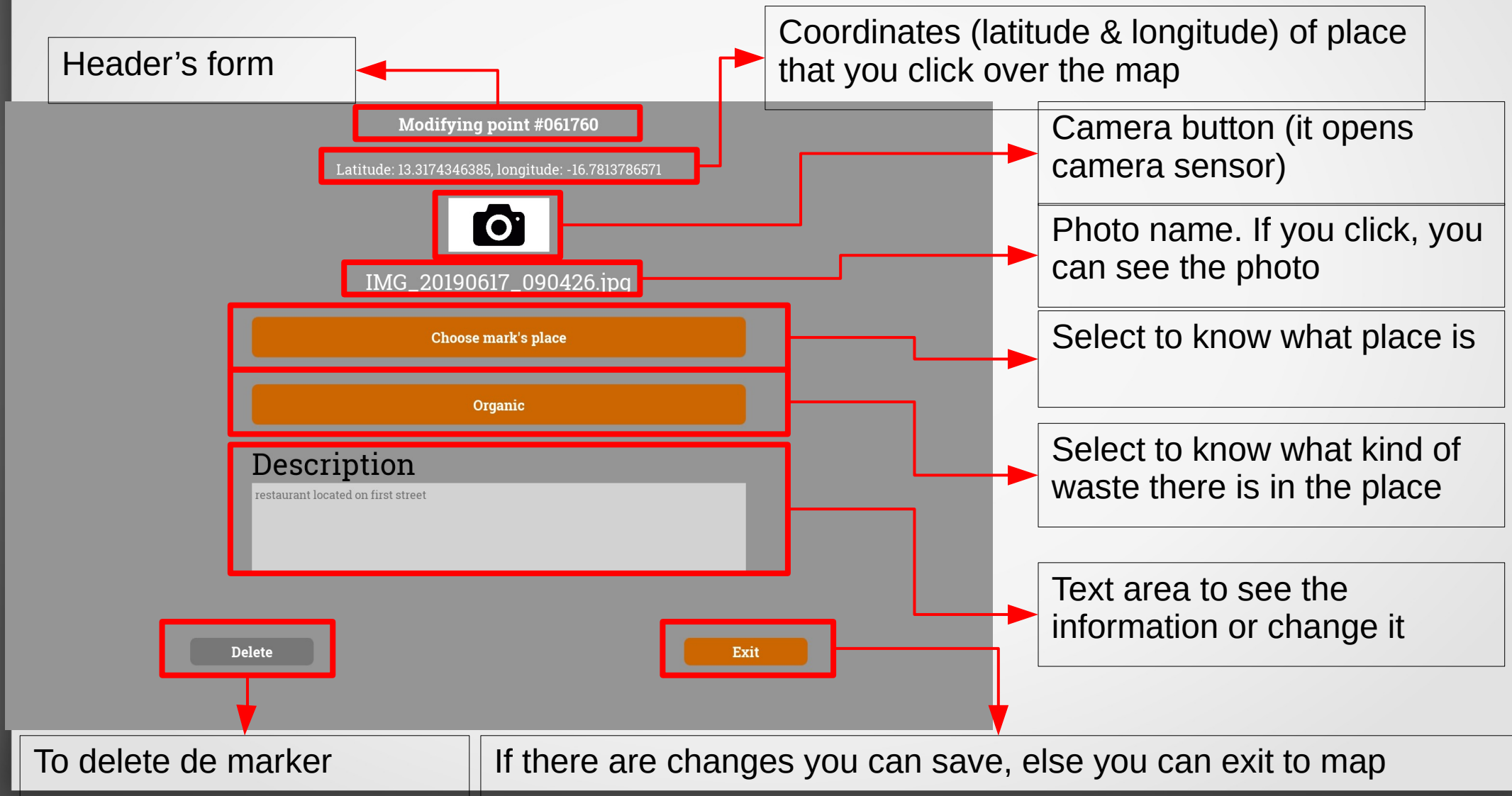
- Insert new marker on map
is mandatory add «mark's place» and «mark's type» to save



5. Markers' form

Pg. 10

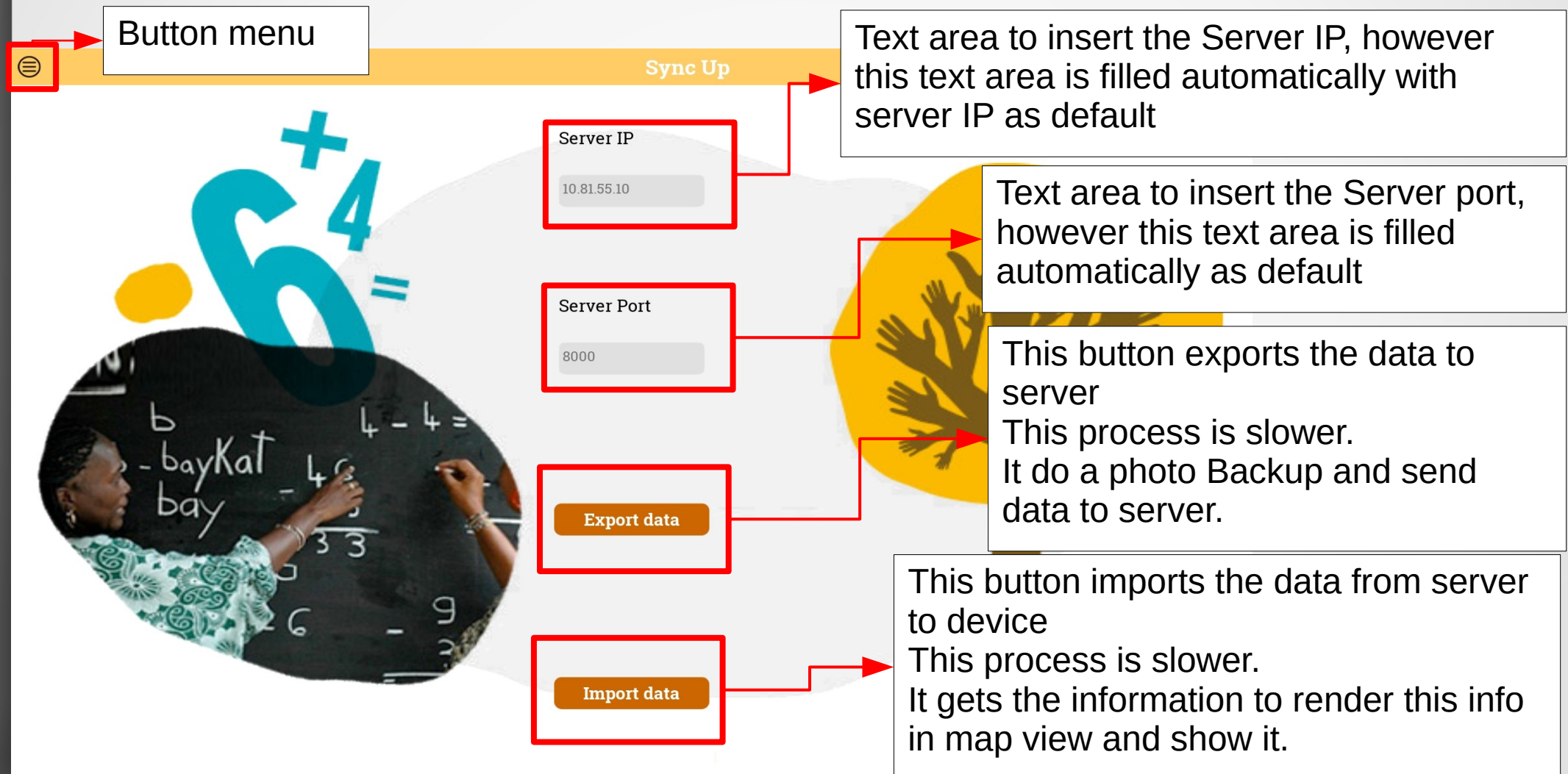
- See the information and/or Modify it of the marker.



6. «Sync Up»

Pg. 11

- This view is thought to export and/or import the data between server and device. This view gets default information to fill the server IP and Port.

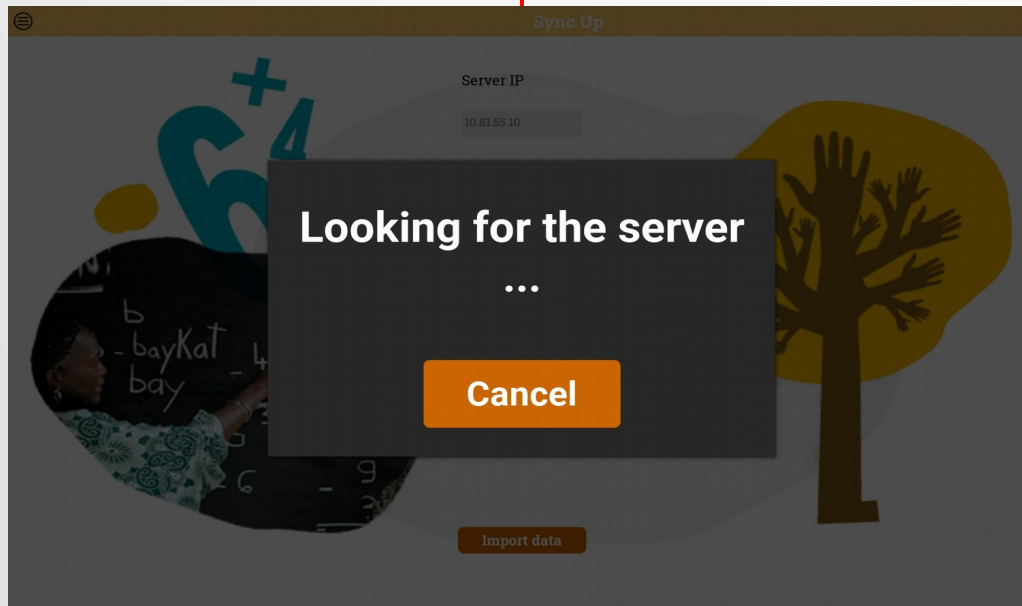


6. «Sync Up»

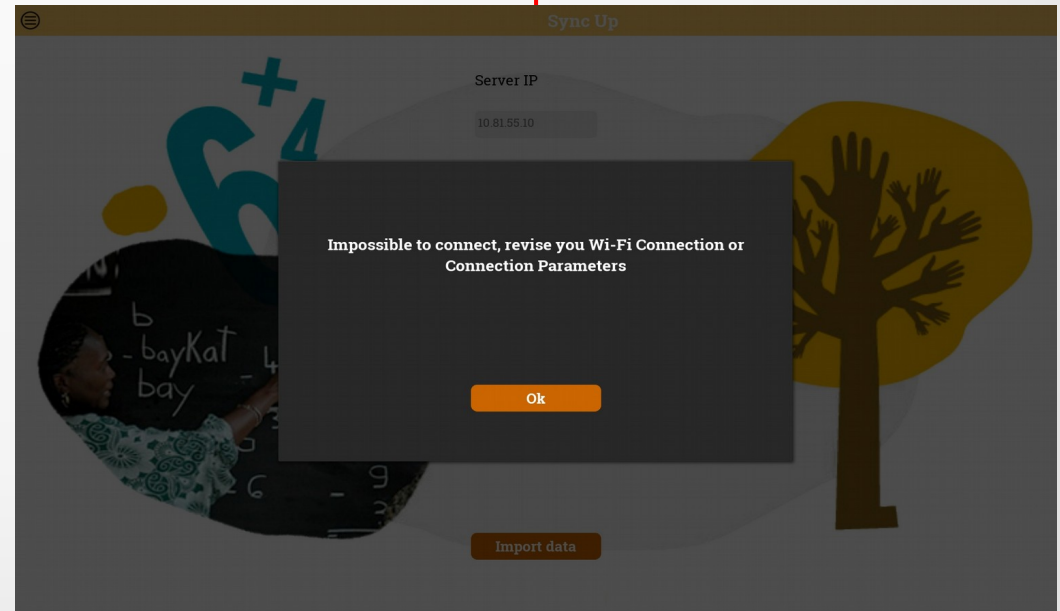
Pg. 12

- In this view you can see error messages. For exemple, you can't connect to server, or Wi-Fi is turn off. You have to read the message to know what happens.

After you click over export or import button, this message appears.



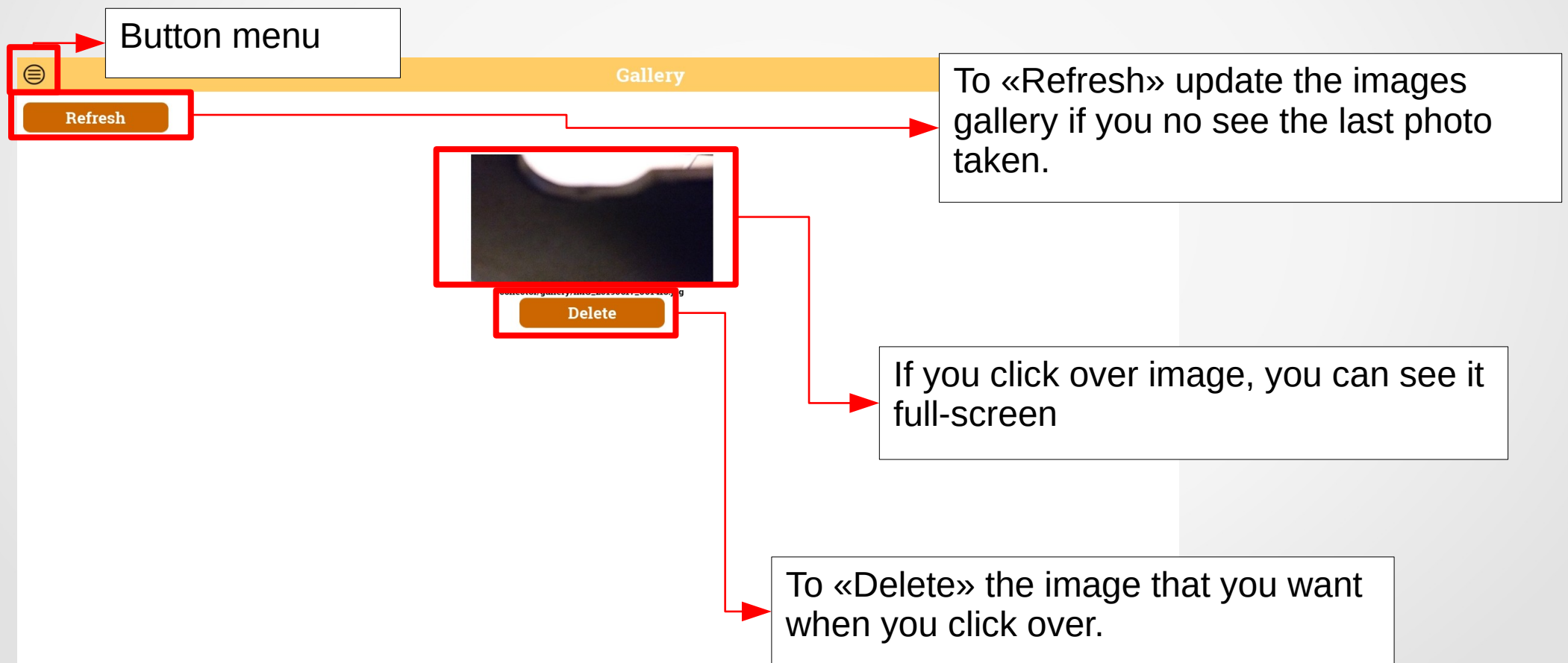
Exemple of error message. There are no active Wi-Fi or the APP can't connect with server to export or import.



7. «Gallery»

Pg. 13

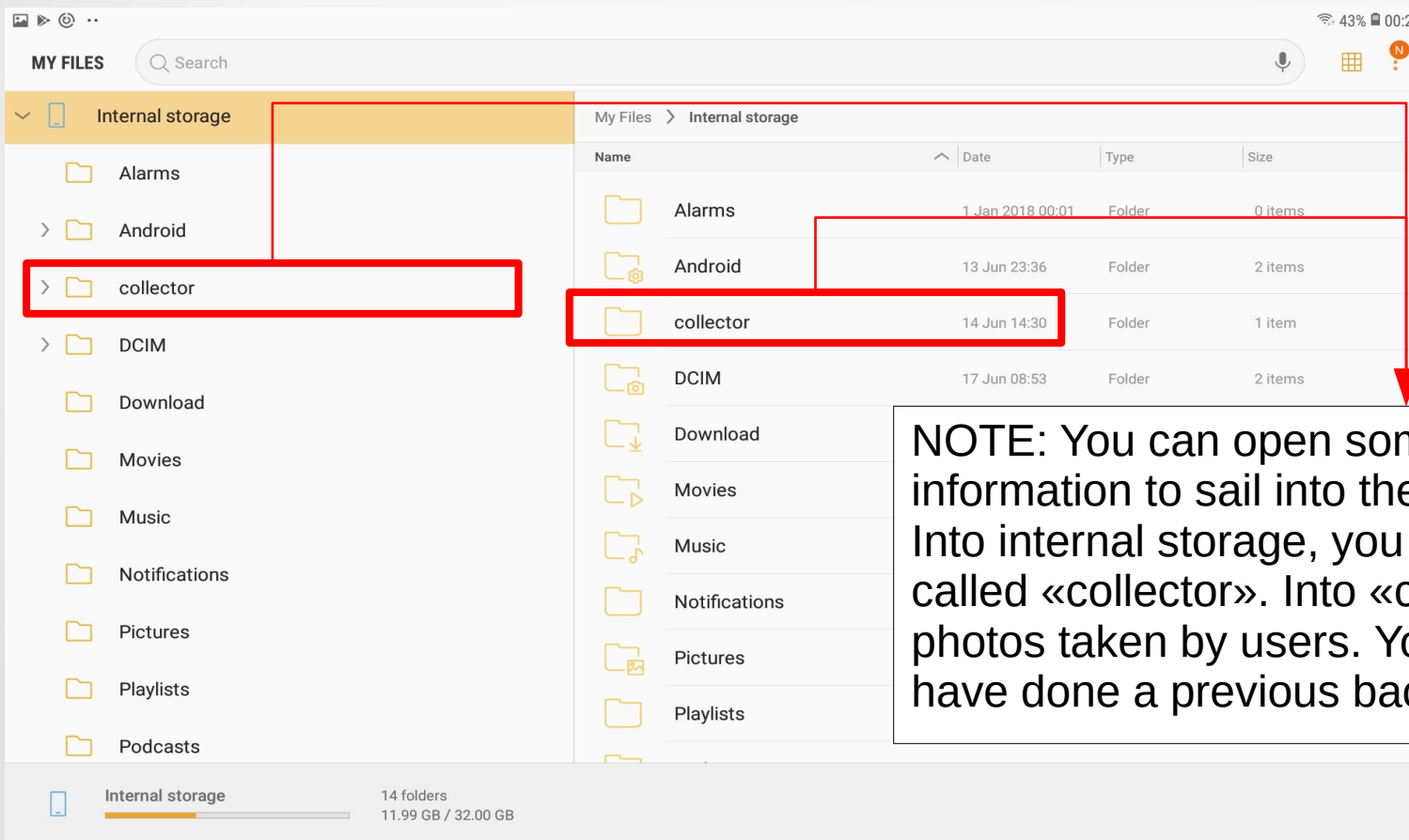
- Into the gallery you can see all images taken by user. You can visualize the photos and you can delete the images.



7. «Gallery»

Pg. 14

- To delete all photos of «GIS Collector» that they are stored into the device. [Take care for no lost all information]



NOTE: You can open some File Manager information to sail into the internal storage. Into internal storage, you have to see a folder called «collector». Into «collector» there are all photos taken by users. You can delete all if you have done a previous backup.